

☒ 3. Erythromycin

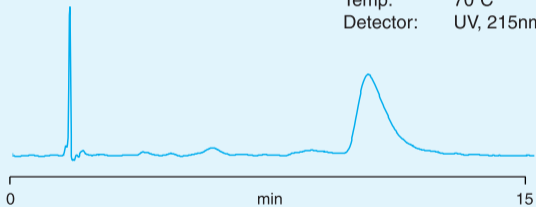
Column: PLRP-S 1000Å 8µm, 250 × 4.6mm (1512-5802)

Eluent: 80.5% 7.5mM K₂HPO₄, pH 9.0 :
16.5% t-butanol : 3% ACN

Flow Rate: 2.0ml/min

Temp: 70°C

Detector: UV, 215nm



Reference: Paesen, Roets and Hoogmartens, *Chromatographia*, Vol 32, 3/4, 1991.