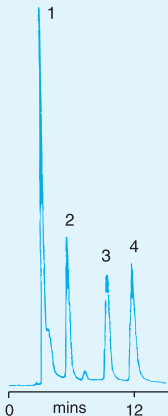


図9. Aliphatic Carboxylic Acids

KEY

- 1 Oxalic acid
- 2 DL-Malic acid
- 3 Citric acid
- 4 Fumaric acid



Column: PLRP-S
100Å 5μm,
250 × 4.6mm
(1512-5500)

Eluent*: 30mM Per-
chloric acid,
pH 2.6

Flow Rate: 0.5ml/min

Detector: RI