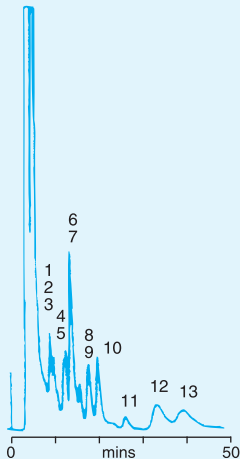


☒ 10. Polar Pollutants Water



Preconcentration of 10ml of River Rhine
Water spiked with 25 μ g/l of 13 Pollutants

KEY

- 1 Simazine
- 2 2,4-DP
- 3 Bentazone
- 4 MCPP
- 5 Atrazine
- 6 Diuron
- 7 2,6-Dimethylaniline
- 8 2-Nitrophenol
- 9 2,6-Dichlorophenol
- 10 2-Chloroaniline
- 11 DNOC
- 12 Metolachlor
- 13 Alachlor

Column: PLRP-S 100 \AA 5 μ m,
250 \times 4.6mm (1512-5500)
Eluent: 50% ACN :
50% 10mM phosphate
buffer,
pH 3
Flow Rate: 1.0ml/min
Detector: UV, 230nm

ER Brouwer, I Liska, RB Geerdink, PCM Frintrop, WH
Mulder, H Lingeman, UA Th Brinkman, Chromatographia,
32(1991) 445-452