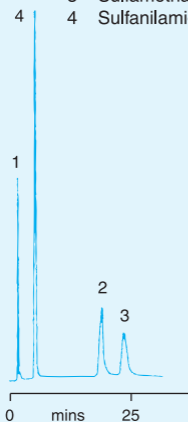


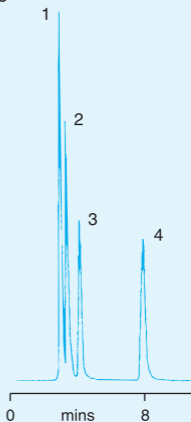
☒ 15. Sulfa Drugs

KEY

- 1 Sulfanilic acid
- 2 Sulfadiazine
- 3 Sulfamethazine
- 4 Sulfanilamide



Eluent: Potassium
sulfate :
ACN, 7 : 1,
pH 2.2



Eluent: Disodium
tetraborate :
ACN, 6 : 1,
pH 9.3

Column: PLRP-S 100Å 5µm,
150 × 4.6mm (1111-3500)

Flow Rate: 1.0ml/min

Detector: UV, 254nm