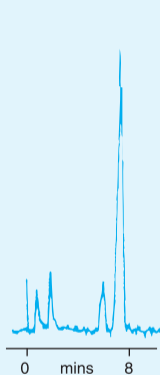


☒ 23. Chlortetracycline Residues in Tissue

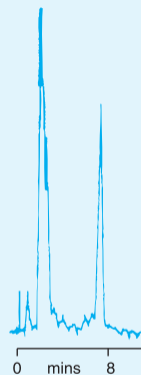


Standard 100ng/g CTC



Blank extract

Column: PLRP-S 100Å 5µm,
150 × 4.6mm (1111-3500)
Eluent: ACN : 0.1M glycine, 1:7,
pH 12
Flow Rate: 1.0ml/min
Detector: Fluorescence
excitation 340nm
emission 420nm



Tissue 180ng/g CTC

Courtesy of W.J.Blanchflower et al, Dept. of Agriculture, Veterinary Science Division, Belfast, UK
(Separation reprinted with the kind permission of The Analyst)