

## ☒ 32. Thiohydantoin Amino Acids

Column: PLRP-S 100Å 5µm, 250 × 2.1mm (1912-5500)

Eluent A: 0.1% TFA in Water

Eluent B: 90% ACN : 10% Water + 0.1% TFA

Gradient: 2% B 4 mins, 2-50% B in 30 mins

Flow Rate: 0.25ml/min

Detector: UV, 265nm

Temp: 30°C

KEY

N Asn

H His

G Gly

Q Gln

D Asp

R Arg

E Glu

A Ala

K Lys

T Thr

C Cys

V Val

Y Tyr

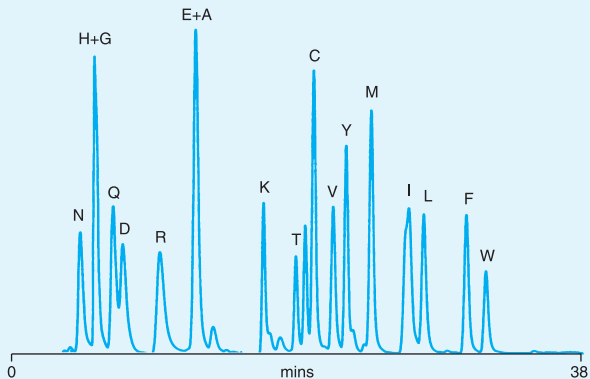
M Met

I Ile

L Leu

F Phe

W Trp



Courtesy of Dr J M Bailey, Beckman Research Institute of The City of Hope, Duarte, CA, USA