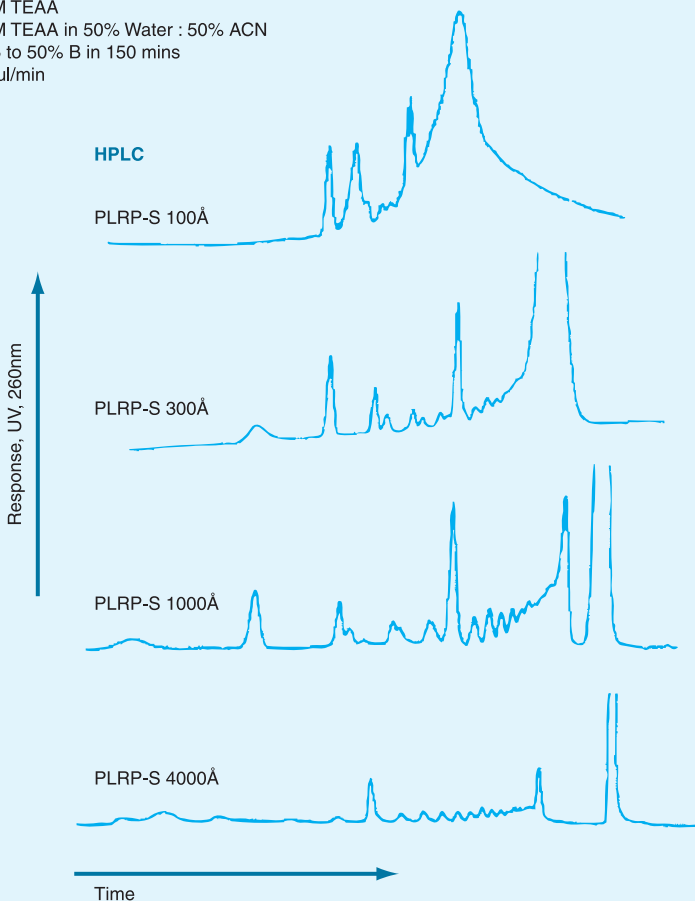


46. Oligonucleotides

Column: PLRP-S, 150 × 2.1 mm
Eluent A: 0.1 M TEAA
Eluent B: 0.1 M TEAA in 50% Water : 50% ACN
Gradient: 12.5 to 50% B in 150 mins
Flow Rate: 200 µl/min



Reprinted from the Journal of Chromatography, Vol 1009, Lloyd et al, "Rigid Polymers...", pp223-230, Copyright (2003), with permission from Elsevier.