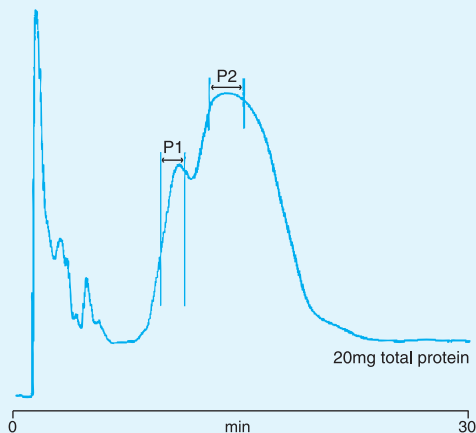


63. QC of an HPLC Fractionation

- (a) Sample: Amyloglucosidase from *Aspergillus niger* culture filtrate
- Column: PL-SAX 1000Å 8µm, 50 × 4.6mm (1551-1802)
- Eluent A: 10mM NaH₂PO₄, pH 7.0
- Eluent B: A + 0.5M NaCl, pH 7.0
- Gradient: 0 - 100% B in 30 mins
- Flow Rate: 1.0ml/min
- Detector: UV, 280nm



- (b) Fractions P1 and P2 were analysed using the PL-SAX 4000Å high speed column.

- Column: PL-SAX 4000Å 8µm, 50 × 4.6mm (1551-1803)
- Eluent A: 10mM Tris HCl, pH 8.0
- Eluent B: A + 0.5M NaCl, pH 8.0
- Gradient: 0 - 100% B in 2 mins
- Flow Rate: 4.0ml/min
- Detector: UV, 280nm

