

### ☒ 3. Fruit Juice Analysis Conditions

Column: PL Hi-Plex Ca,300x7.7mm

Eluent: Water

Temp: 85°C

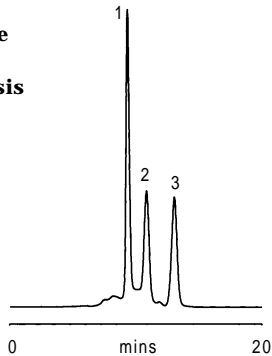
Flow Rate: 0.6 ml/min

Detector: RI

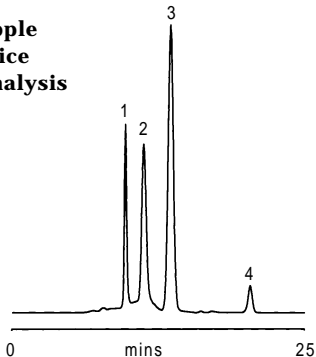
#### KEY

1. Sucrose
2. Glucose
3. Fructose
4. Sorbitol

#### A. Orange Juice Analysis



#### B. Apple Juice Analysis



#### C. Tomato Juice Analysis

