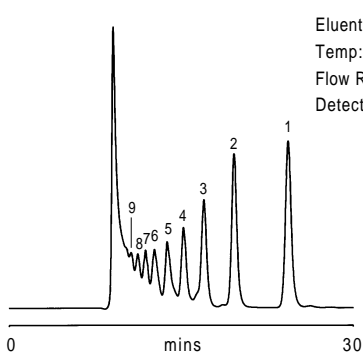


9. PL Hi-Plex Na vs PL Hi-Plex Ag For Corn Syrup Analysis

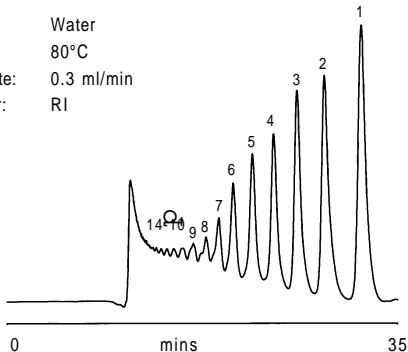
KEY

- 1. Dp1
- 2. Dp2
- 3. Dp3
- 4. Dp4
- 5. Dp5
- 6. Dp6
- 7. Dp7
- 8. Dp8
- 9. Dp9
- 10. Dp10
- 11. Dp11
- 12. Dp12
- 13. Dp13
- 14. Dp14

Eluent: Water
Temp: 80°C
Flow Rate: 0.3 ml/min
Detector: RI



PL Hi-Plex Na, 300x7.7mm, 11bar



PL Hi-Plex Ag, 300x7.7mm, 6bar